

# Recessed Dryer Receptacles and Through Penetration Firestop Systems - 1 Hour F & T Rating

## UL Report Number XHEZ.W-L-7182

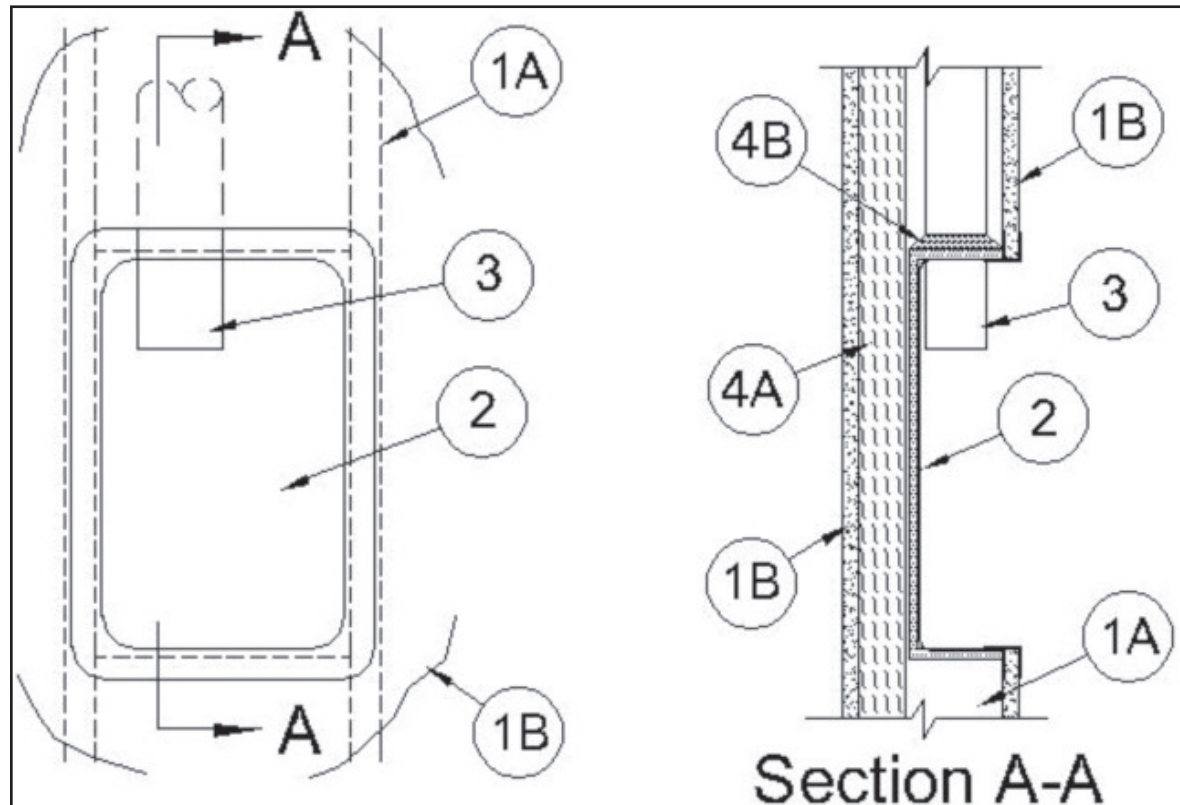
### Construction

SOLUTIONS



Wall Assembly	Cabinet*	Vent Duct	Firestop System
<ul style="list-style-type: none"> <li>The 1 hr. fire rated framed gypsum board wall assembly - per the individual U400 or V400 Series Wall and Partition Designs in the UL Fire Resistance Directory and include these features:</li> </ul>	<ul style="list-style-type: none"> <li>Flanged steel cabinet with/ separate trim ring.</li> <li>Precut pieces of mat material and foil tape installed per manufacturers instructions.</li> </ul>	<ul style="list-style-type: none"> <li>Nominal 4" diameter</li> <li>26 gauge galvanized steel</li> </ul>	Batts and Blankets <ul style="list-style-type: none"> <li>Min. 2" thickness of 4 pcf mineral wool batt insulation.</li> </ul>
Studs <ul style="list-style-type: none"> <li>Min. 6" steel channel studs - 24" OC max.</li> <li>Additional 11" nominal stud cavity required to support and accommodate the cabinet.</li> </ul>	Models <ul style="list-style-type: none"> <li>DBX1000M 4"</li> <li>DBX1000M 6"</li> </ul>		DBX1000M 4" <ul style="list-style-type: none"> <li>Installed to line entire height of stud cavity below, behind &amp; above the cabinet.</li> </ul> DBX1000M 6" <ul style="list-style-type: none"> <li>Installed between gypsum board and vent duct above the back of the cabinet.</li> </ul>
Gypsum Board* <ul style="list-style-type: none"> <li>As specified in the individual Wall &amp; Partition Design.</li> <li>10" x 17" nominal cut out for cabinet.</li> </ul>			Fill, Void or Cavity Material* - Caulk <ul style="list-style-type: none"> <li>Min. 1/2" thickness of fill material applied to vent pipe / cabinet interface within the stud cavity.</li> </ul>

**SIMPLE. EASY. ATTRACTIVE.**



- Wall Assembly
  - Studs
  - Gypsum Board
- Cabinet
- Vent Duct
- Firestop System
  - Batts and Blankets
  - Fill, Void or Cavity Materials - Caulk

3M COMPANY

3M FIRE PROTECTION PRODUCTS - CP 25WB+

### Construction

SOLUTIONS

7918 East McClain Drive  
Suite 1  
Scottsdale, AZ 85260  
(866) 270-2840 Toll Free  
(480) 346-8250 Fax

[www.dryersolutions.com](http://www.dryersolutions.com)

\* Bearing the UL Classification Mark